

# ÚFAL Meeting

Malá Strana, Prague, April 20, 2026

---

# Agenda

1. Offices and Kaiserstein Palace (Barbora Hladká)
2. New projects (Jan Hajič)
3. ESLLI 2026 (Dušan Variš)
4. Knowledge and Technology Transfer (Jiří Valach)
5. PR (Alena Chrastová)
6. Admin (Iva Doušová)

# Offices and Kaiserstein Palace

- ÚFAL 137 employees as of April 1/2026

# ÚFAL Offices (url)

☰ U ÚFAL Workplace & Ser... 🔍 ⋮

ÚFAL MFF

A map of ÚFAL workplaces, locations, and practical services, including parking, places to eat, and other facilities.

494 views  
Published on March 10

SHARE

---

Office locations

- 📍 ÚFAL @ Profesní dům, Malostranské nám. 2/25
- 📍 ÚFAL @ Voršíšská 144/1
- 📍 ÚFAL @ IMPAKT Building N, V Holešovičkách 2
- 📍 ÚFAL @ Kaiserštejnský palác, Malostranské ná.

---

[P]

---

Places to eat (cafeterias, cafes, restaurants)

---

Services & Facilities

# Malostranské náměstí

☰
U
ÚFAL Workplace & Ser... UFAL MFF
🔍
⋮

A map of ÚFAL workplaces, locations, and practical services, including parking, places to eat, and other facilities. ☆

494 views  
Published on March 10

SHARE

---

**Office locations**

- U ÚFAL @ Profesní dům, Malostranské nám. 2/25
- U ÚFAL @ Voršílská 144/1
- U ÚFAL @ IMPAKT Building N, V Holešovičkách 2
- U ÚFAL @ Kaiserštejnský palác, Malostranské ná...

---

[P]

---

Places to eat (cafeterias, cafes, restaurants)

---

Services & Facilities

# Malostranské náměstí 25 and 34



# Malostranské náměstí





# Kaiserstein Palace – Offices No. 305, 306, 307



305 – 12.90m<sup>2</sup>      306 – 12.90 m<sup>2</sup>

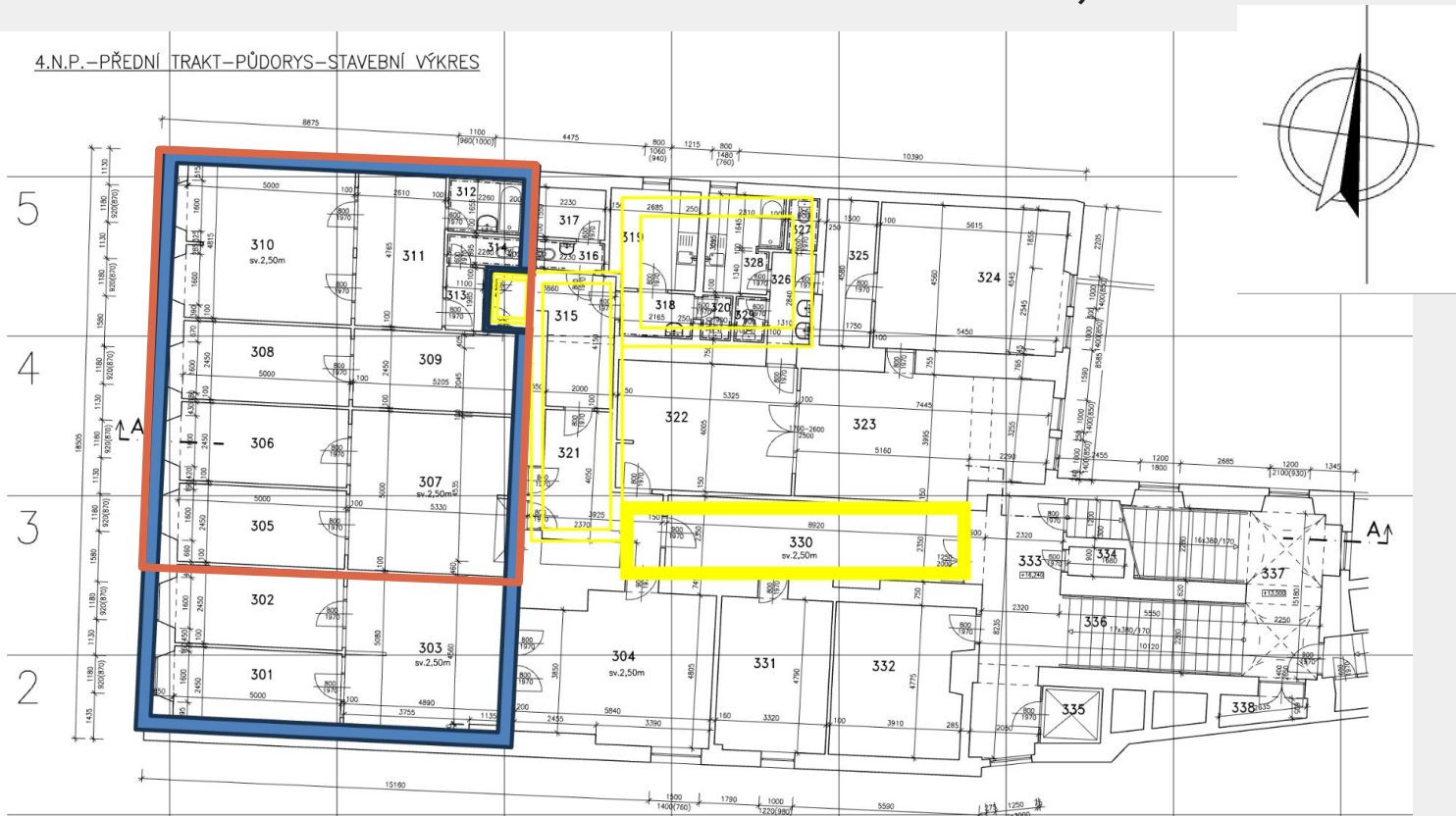
307 – 25.95 m<sup>2</sup>

$\Sigma = 51.75 \text{ m}^2$

# Kaiserstein Palace – Offices No. 308, 309

Malostranské sq.

4.N.P. – PŘEDNÍ TRAKT – PŮDORYS – STAVEBNÍ VÝKRES



# Kaiserstein Palace – Offices No. 308, 309



308 – 12.90m<sup>2</sup>

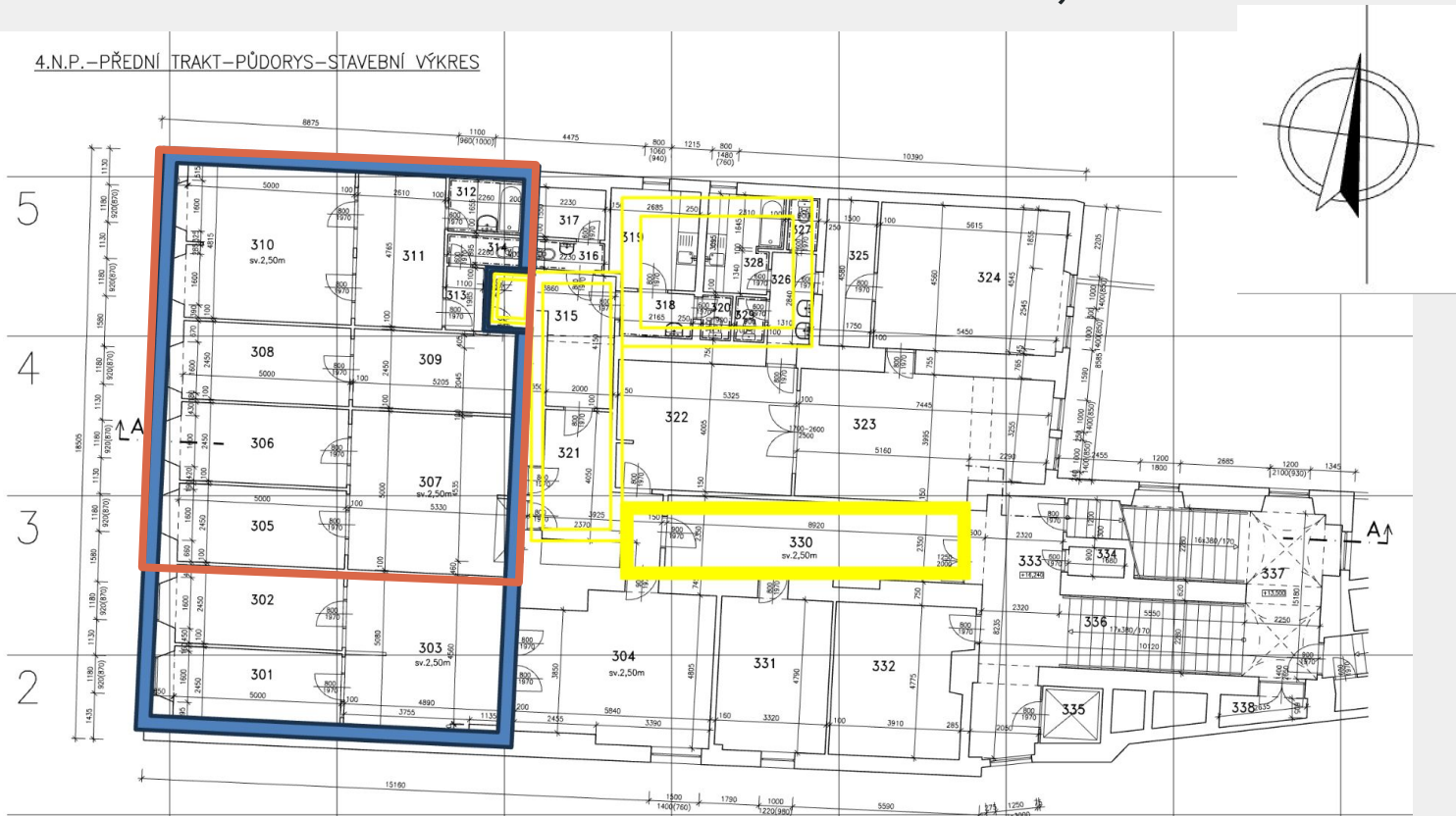
309 – 12.72 m<sup>2</sup>

$\Sigma = 25.62 \text{ m}^2$

# Kaiserstein Palace – Offices No. 310, 311

Malostranské sq.

4.N.P. – PŘEDNÍ TRAKT – PŮDORYS – STAVEBNÍ VÝKRES



# Kaiserstein Palace – Offices No. 310, 311



310 – 25.34m<sup>2</sup>

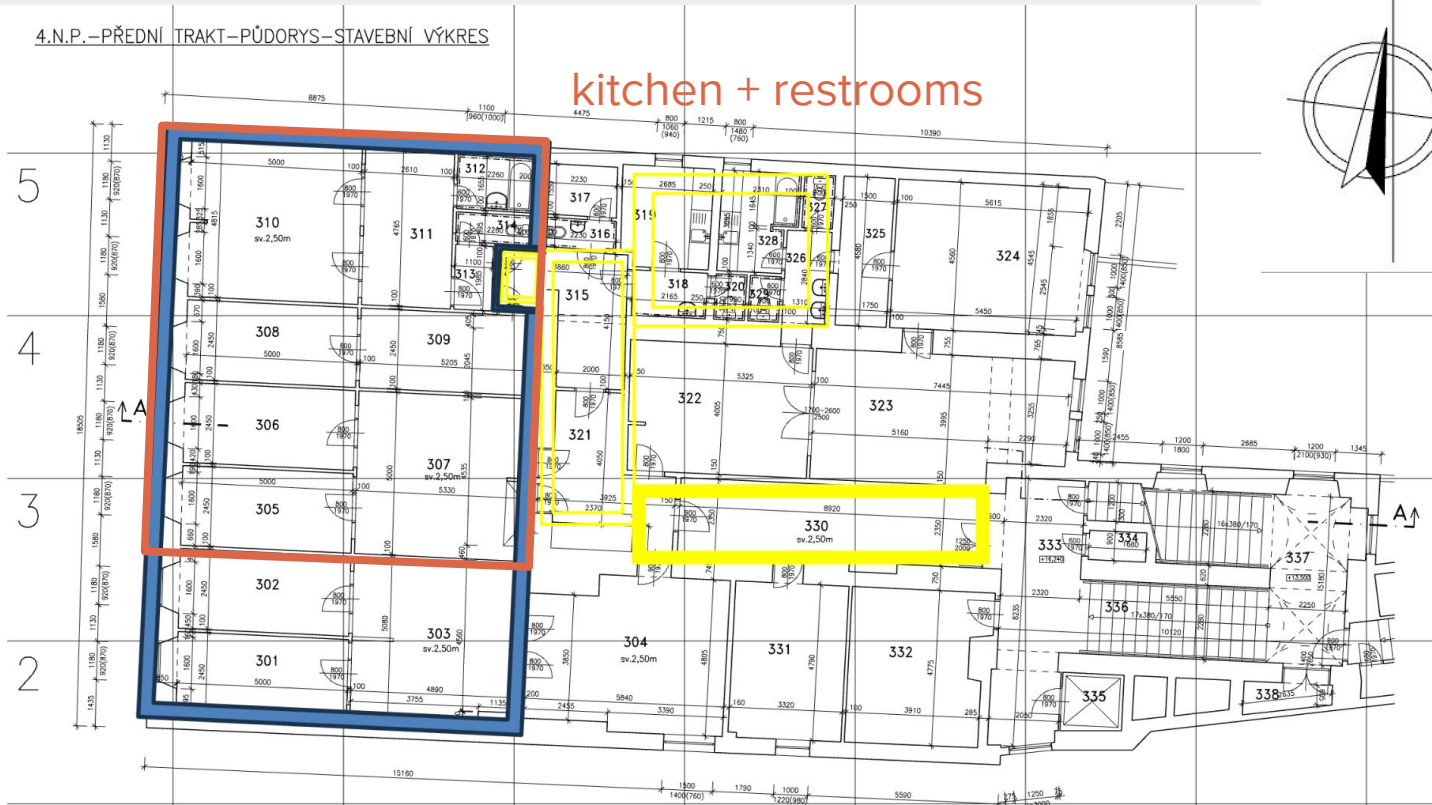
311 – 12.41 m<sup>2</sup>

$\Sigma = 37.75 \text{ m}^2$

# Kaiserstein Palace – Shared spaces

Malostranské sq.

4.N.P. – PŘEDNÍ TRAKT – PŮDORYS – STAVEBNÍ VÝKRES



# Kaiserstein Palace

- Freshly painted, cleaned, unfurnished
- AC, no parking slots, 24/7, barrier-free access, elevator
- Building entry via code, office entry with keys
- Space for 20–30 work desks
- The contract April 1, 2026 - December 31, 2029

If you'd like to see the space, please contact Iva D.  
 She'll organize 1–2 office tours for you.

# What's next?

- Thank you for completing the survey – a total of 85 responses
  - Some of you already expressed interest in moving to KP
  - Pre-selected groups of employees who may be relocated to KP
  - Several shared desks with a booking system
- Contact an interior designer
  - Plan the desk layout, where to place the meeting room,...
- IT setting
- Malostranské 25 will still be our base camp

# New projects

- EOSC Open Science II (UK / RUK)
  - OP JAK MŠMT, 2025-2028
  - Approx. 2 FTE, building “FAIR” datasets for LINDAT: PDT-C, SynSemClass, integrating mapping SW to LINDAT repository; most staff paid starting 2027
- National Center for Artificial Intelligence (NCUI), ČVUT
  - TAČR Sigma DC5, 2026-2031, 500 mil. Kč total
  - Approx. 2,5 FTE, 3 teams: Ondřej Bojar, Barbora Hladká, Petr Škoda (KSI)
- Czech AI Factory (VŠB Ostrava - IT4Innovations)
  - Digital / Horizon Europe, 2026-2029, 1 mld. Kč total, 500 mil. For GPU cluster in Ostrava
  - Most of ÚFAL participation: AI tools, models and algorithms (output: AI services)
    - Teaming with mainly ČVUT (J. Matas), VUT (J. Černocký)
    - ÚFAL Budget: approx. 50 mil. Kč (~16 mil. per year, incl travel, overhead):
      - approx. 6 FTE: 1,6 FTE for PhDs, 2 FTE for postdocs, 0,5 FTE for senior researcher, 1,5 FTE for services development, +admin/mgmt)

# ESSLLI 2026

- **Date:** 3. - 14. August (<https://2026.esslli.eu/>)
- **Place:** Faculty of Civil Engineering, CTU, Dejvice
  - **Lunchtime:** Technical Canteen, CTU
- **State of Affairs:**
  - **Schedule:** *in-preparation (week assignments - mostly DONE)*
  - **Evening lectures:** *announcement coming soon*
  - **Social Event:** live piano concert + robots!
  - **Other events:** football match, karaoke night (?), coffee break board game corner
  - **Follow ESSLLI 2026 / Join ESSLLI 2026 Discord for more info**
- **REGISTRATIONS OPEN!**
  - **Early-bird deadline:** 31. May
  - **Fee waivers for volunteers - Limited amount!**

# Knowledge and Technology Transfer

- Reminder: Better sooner than later
- AI Interpreting service – opportunity for students

# PR

BlueSky, LinkedIn - [how to add ÚFAL](#) to your profile

Impact of personal posts shared by institutions

Current challenges

Czech Radio's International Service

Vědafest



# Admin

## HR:

- **!** Hiring of non-Czech people (both under employment contracts and agreements):
  - ◆ future employee must provide:
    - EU citizens: copy of ID/passport
    - non-EU citizens: copy of ID/passport + residence permit in Czechia
  - ◆ if future employee comes from a country from [this list](#) issued by the Ministry of Health, she/he has to undergo a chest X-ray with negative result before the contract signing to exclude tuberculosis
- HR dpt. is updating their database: you may have received a looking-like-a-scam request for sending them a copy of your ID - don't worry, it's OK :)
- How to find your payslips: visit HR Portal <https://is.cuni.cz/wegje/emp> => Payslips
- A1 form: needed if you are sent by your employer to work temporarily in another country (all EU countries+other countries Czechia signed social security contracts with) - applicants should contact [Mr. Jančák](#) from HR dpt.

# Admin



**Business trips** (more info on [ÚFAL Wiki](#)):

- Before any purchases for your BT, have your travel form in SIS approved & accept the approvals. Fill in planned dates if you don't know exact dates yet.
- When booking on [Booking.com](#): in the field “Special requests” insert this: *Please issue an invoice to: Charles University, Faculty of Mathematics and Physics, Ke Karlovu 3, 121 16 Praha 2, Czech Republic. VAT ID: CZ00216208.*
- NB: faculty limits for accommodation (180 €/night/person in Europe, 200 € outside Europe)
- If your BT has to be billed with 0 expenses, we have to sign a declaration (čestné prohlášení) when closing the travel form after the BT.
- New rules for travel insurance from 1st June 2026: no annual cards, for interruption of your BT you yourself have to arrange travel insurance
- Interruption of BT (= holiday request in CIS!): no reimbursements, NB: last night before the interruption starts and last night of the interruption are not reimbursed either - they are considered as part of your holidays.